

# Paulos for beginners (MANUAL)

Modifying any stereo amplifier:

First give additional capacitor to the main +/- (of high capacitance).

If you use right step up transformer and well done noplis (0,35mm<sup>2</sup> insulated wire 6-10m) and correct getting signal from mains system should loop and work, but then you may try with the right channel. The easiest way to achieve this is to put +3.3V stabiliser module, self made whistle circuit, wound a fat coil with many turns (thick one), then close the coil with any series RC circuit to the R CH.(-). Between RC and the coil output give simple voltage doubler, then DC-DC Inverter of higher power and connect by 1N diode into plus of a supply (after right regulation, but don't exceed the voltage). If you don't have DC-DC Step Up Inverter you can modify resistors inside the amplifier channel (for 50-70% of existing values). Two or three resistors exchanged boosts output voltage on the right channel. Also you can use voltage tripler (search on Youtube).

Paulos should work properly if you use a power cable from both sides ended up with sockets and a simple switch between the phase input of a device, artificial live (right output of a step up transformer) and live from the grid line socket. Also enhance the heatsink quite professionally by screwing more specific tin (the one from the old TV mainboard).

Open the mainboard with 1M ohm (solder to the pins of the bridge). Should add extra watts.

In older amplifiers step up transformer (4 ohm 9-12V) always had sides to check which is live and which should be grounded. Better with extra grounding (any version).

Its good to exchange one or two resistors in the power end of right channel. Another method to tune the PCB board is to add a resistor of k ohm values in parallel (solder onto existing resistor pins). If you have two resistors equal in parallel, then output resistance is half as much.

Don't forget to wound noplis around additional capacitors and main transformer.

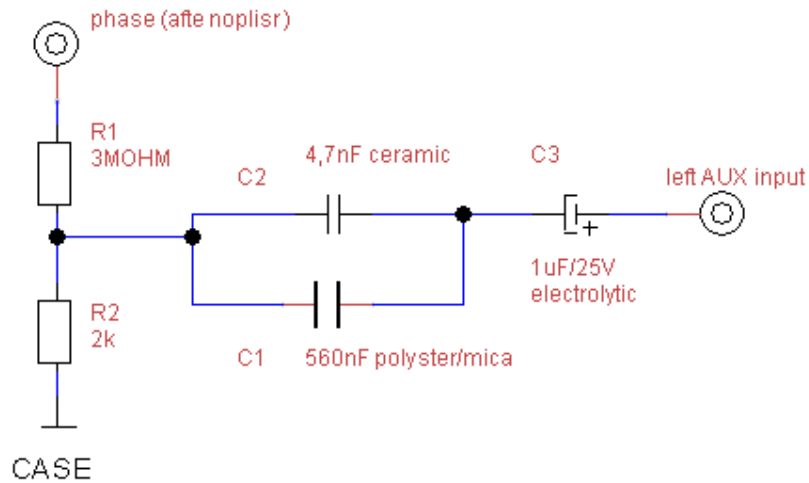
To fuel the right channel utilize not only whistle but also take from mains after 3Mohm's take 220nF mica cap. To add extra watts you may set 50Hz noise generator into LEFT AUX also which I call Tinger in this project.

You can set +5V DC on your metal chassis via any coil. This is also method.

[Http://www.dxer.opx.pl](http://www.dxer.opx.pl)

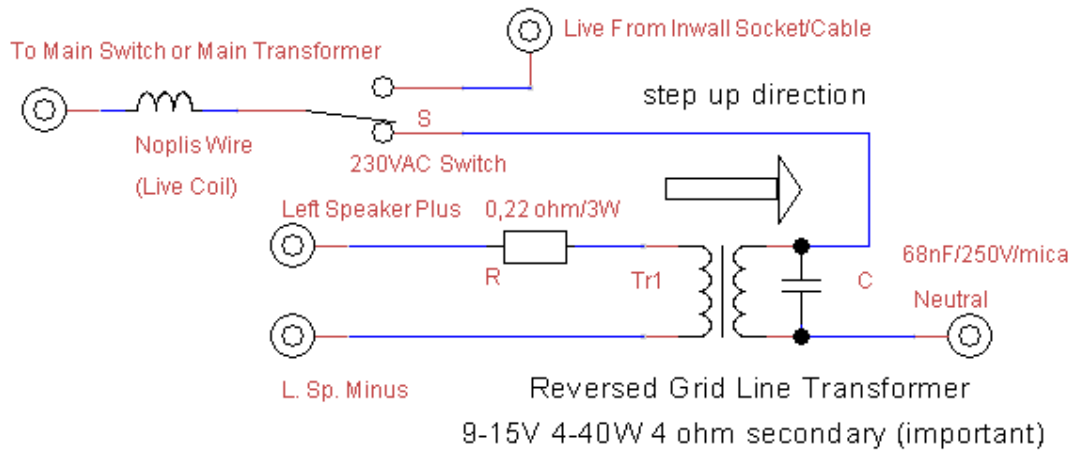
Schematics:

## Paulos for beginners - getting live signal



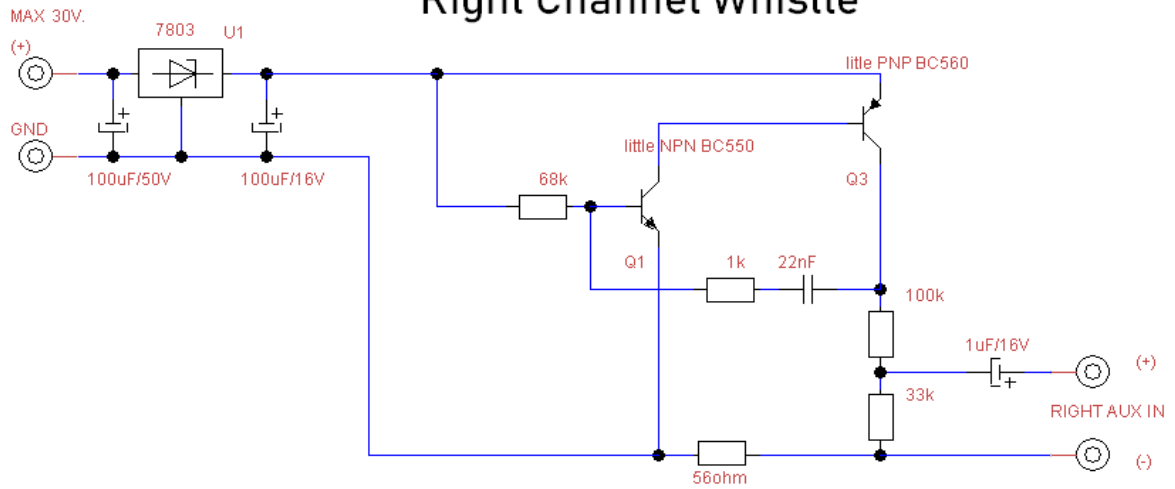
dxer\_87

## Making artificial live with left channel



dxer\_87

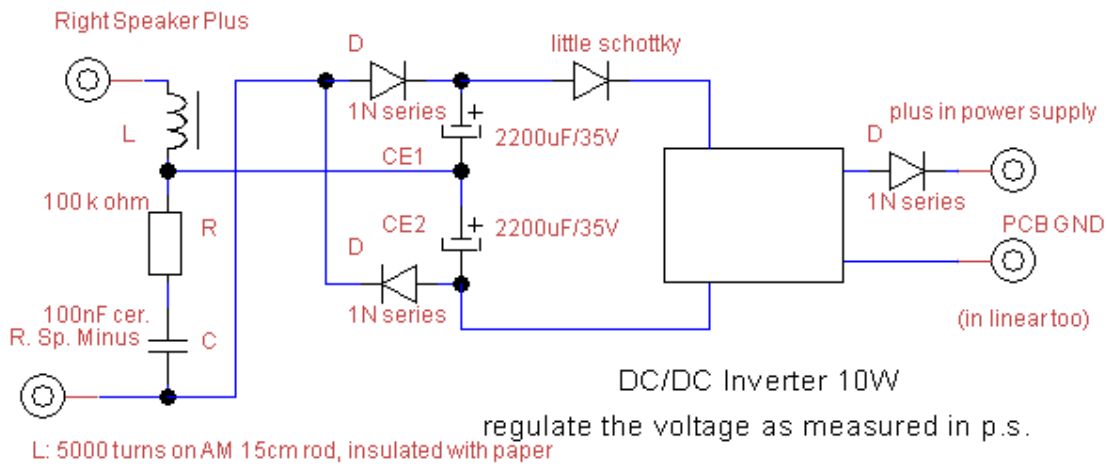
## Right Channel Whistle



can be given both with get. signal from trafo

ver.2 corrected dxer\_87

## How to utilize right channel - energizing p.s.



dxer\_87